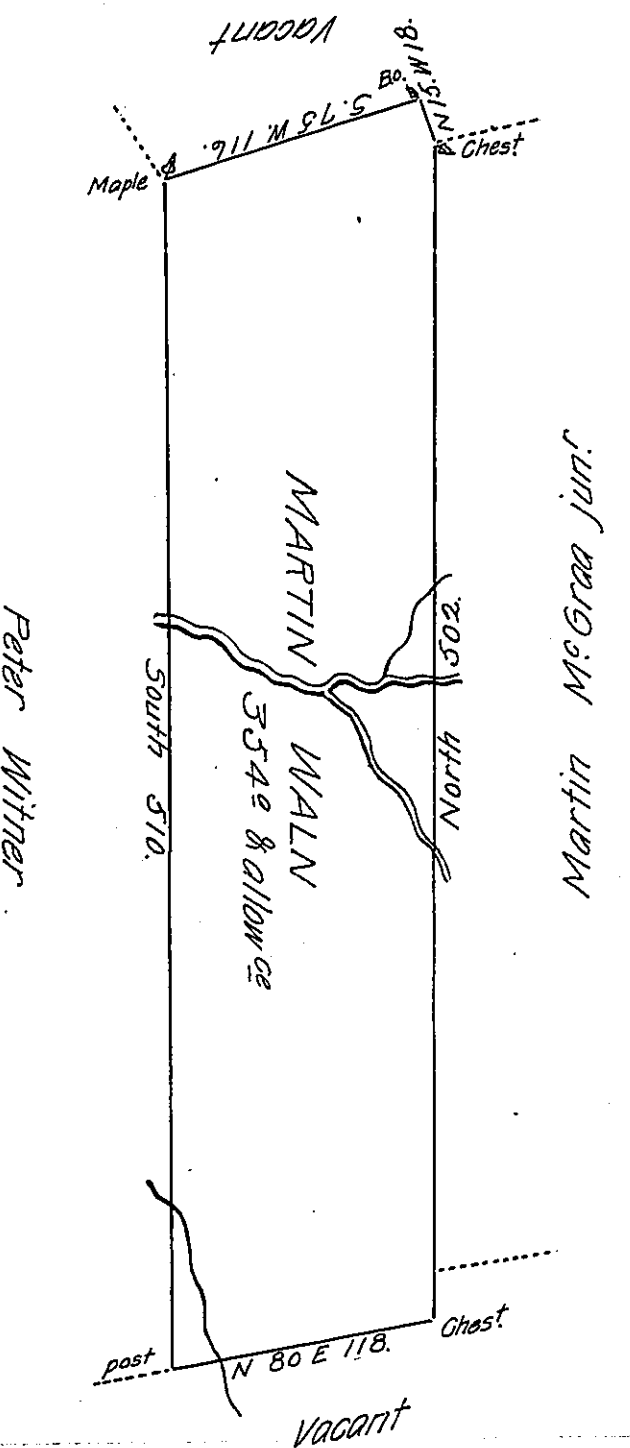


FORM NO 1.



A Draught of a Tract of Land called Litchfield Situate on a Sinking branch of Fishing Creek in Sugar Valley and in Bald Eagle Township Northumberland County Surveyed the 9th Day of October 1773 for Martin Waln in pursuance of his Warrant dated the 28<sup>th</sup> Day of July 1773 Containing Three Hundred & fifty four Acres & Allow<sup>ce</sup> of six Acres P Cent & C.

Cha<sup>s</sup> Lukens D.S.

To John Lukens Esq.  
Surveyor General.

IN TESTIMONY that the above is a copy of the original remaining on file in the Department of Internal Affairs of Pennsylvania, made conformably to an Act of Assembly approved the 16th day of February, 1833, I have hereunto set my Hand and caused the Seal of said Department to be affixed at Harrisburg, this eleventh day of March 1907.

*Isaac B. Brown*  
Secretary of Internal Affairs.